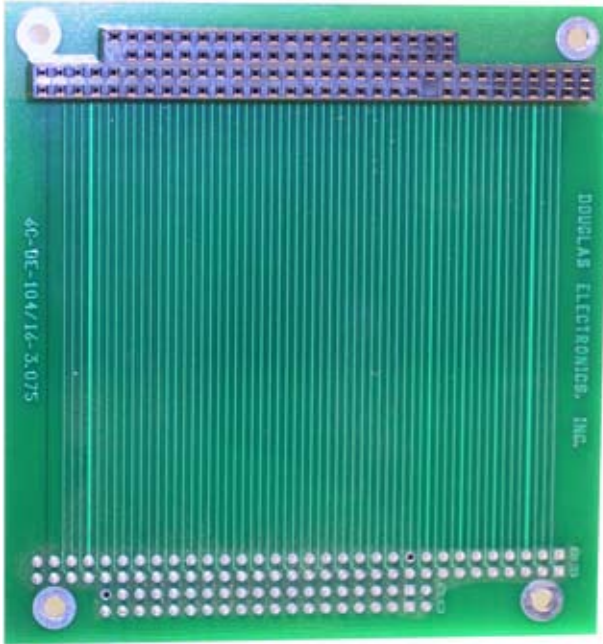
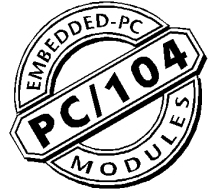




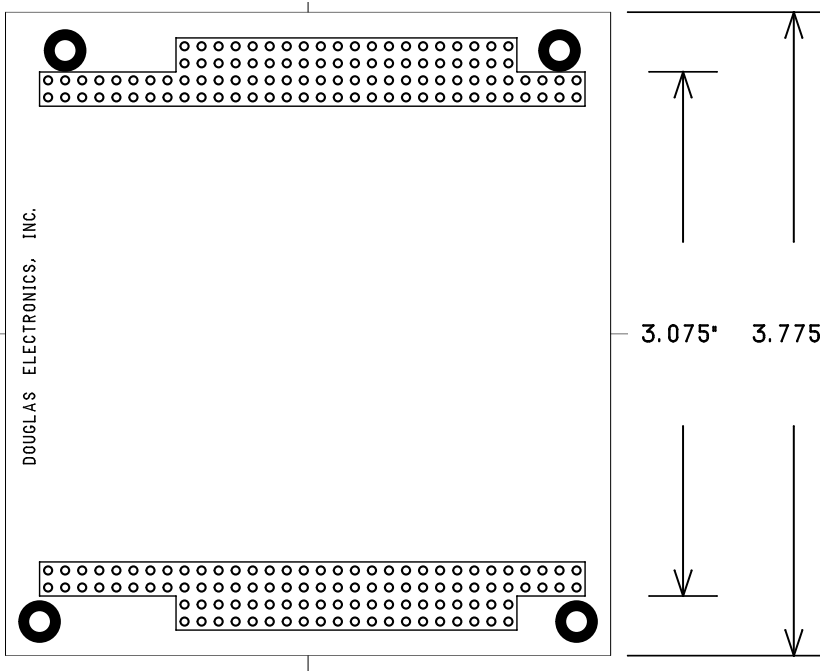
**DOUGLAS
ELECTRONICS
INC.**

6C-DE-104/16-3.75

PC/104
Extender



The 6C-DE-104/16-3.075 board is a short-ened version of the 6C-DE-104/16-3.75. (W63). Mounting holes align to one side only.



Douglas Electronics, Inc.

2777 Alvarado Street • San Leandro, CA 94577
Voice +1.510.483.8770
Fax +1.510.483.6453
info@douglas.com

W-75

www.douglas.com/pc104/