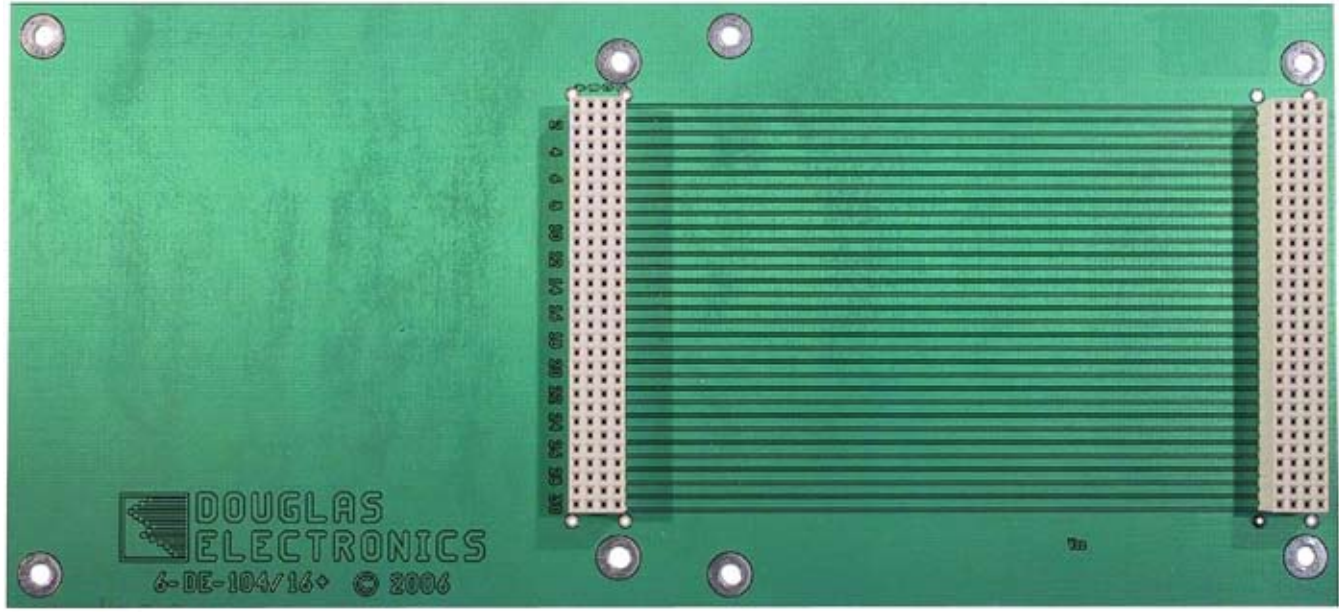
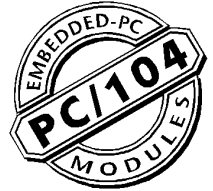




DOUGLAS  
ELECTRONICS  
INC.

**6-DE-63/104**  
PC/104Plus (or PCI-104)  
Extender



The 6-DE-104/16+ board supports two stacks of PCI-104 boards. The normal configuration is with two sockets, however, it is also available with pass-through connectors (sockets and pins) in place of the sockets.

Options:

- \*6-DE-104/16+-S (sockets only)
- 6-DE-104/16+-P (Pins only)
- 6-DE-104/16+-T (pass-through connectors)

**Douglas Electronics, Inc.**

2777 Alvarado Street • San Leandro, CA 94577  
Voice +1.510.483.8770  
Fax +1.510.483.6453  
info@douglas.com

[www.douglas.com/pc104/](http://www.douglas.com/pc104/)

W-70