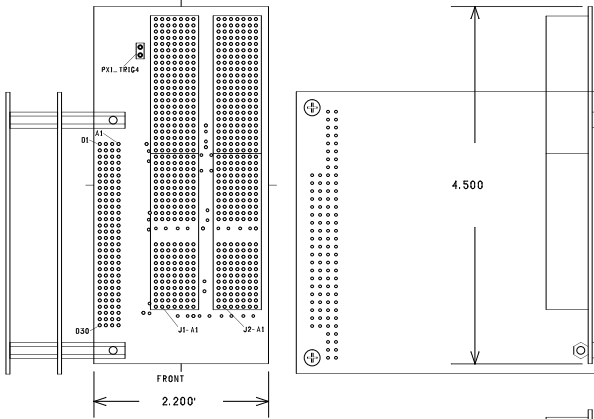
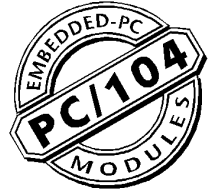


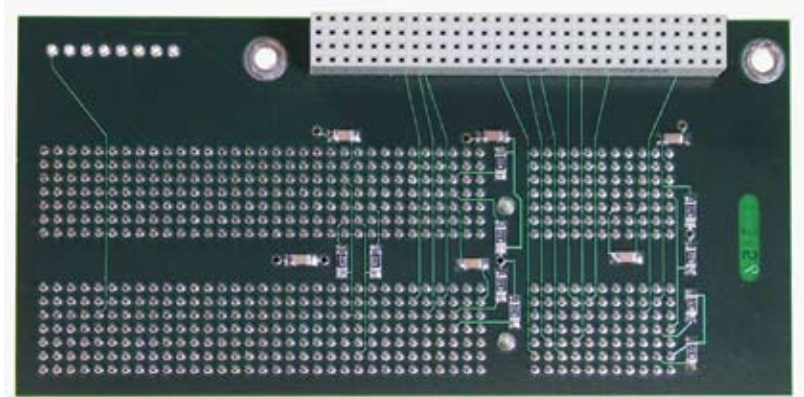
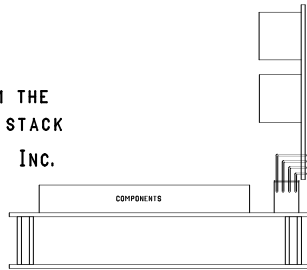


**DOUGLAS  
ELECTRONICS  
INC.**

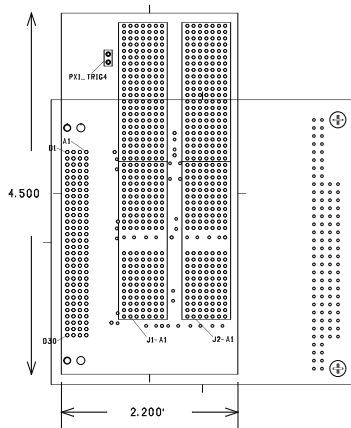
**6-DE-2CPCI-PC/104+**  
PC/104Plus <—> Two cPCI Board  
Interface



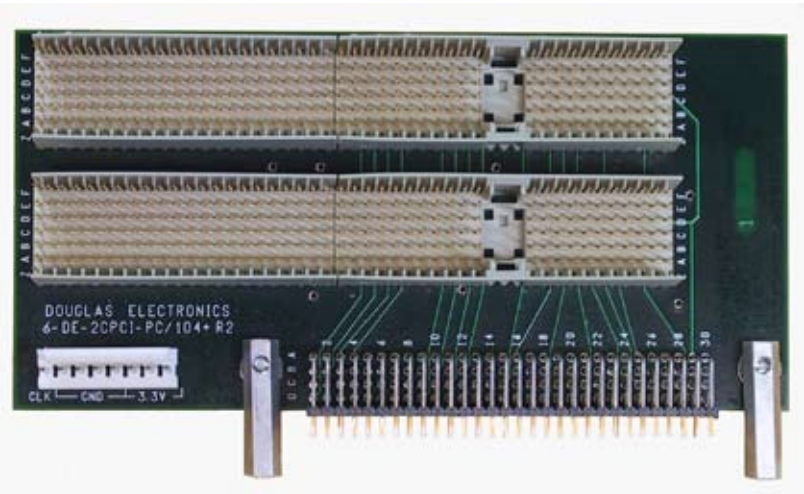
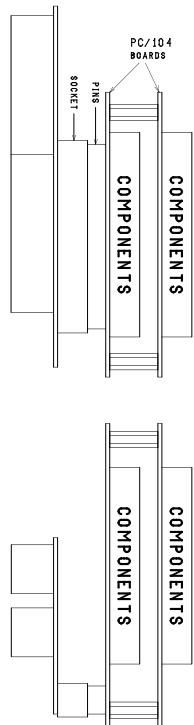
**6-DE-2CPCI-PC/104+ M**  
Two cPCI boards from the  
TOP of a PC/104PLUS stack  
DOUGLAS ELECTRONICS, INC.



The 6-DE-2CPCI-PC/104+ board supports two cPCI board from the PC/104Plus buss.



**6-DE-2CPCI-PC/104+ F**  
Two cPCI boards from the  
BOTTOM of a PC/104PLUS stack  
DOUGLAS ELECTRONICS, INC.



Options:

- 6-DE-2CPCI-PC/104+M (PC/104Plus Pins for the top of a PC/104Plus stack)
- 6-DE-2CPCI-PC/104+F (PC/104Plus socket for placing the board on the bottom of a PC/104Plus stack)

**Douglas Electronics, Inc.**  
2777 Alvarado Street • San Leandro, CA 94577  
Voice +1.510.483.8770  
Fax +1.510.483.6453  
info@douglas.com

W-69

[www.douglas.com/pc104/](http://www.douglas.com/pc104/)