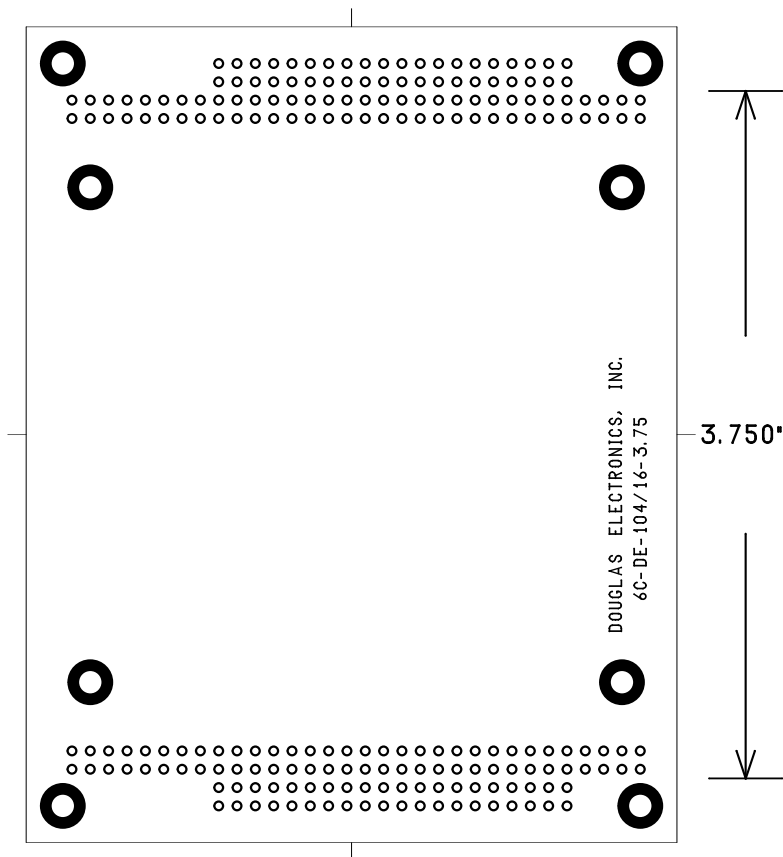
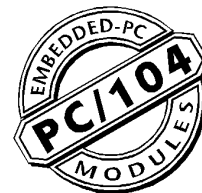




DOUGLAS  
ELECTRONICS  
INC.

## 6C-DE-104/16-3.75

PC/104  
Extender



The 6C-DE-104/16-3.75S board allows two stacks of PC/104 boards to be joined with the solder side of both stacks facing the 6C-DE-104/16-3.75S board. An alternate is to use the 6C-DE-104/16-3.75P board and have the component side of each stack facing the 6C-DE-104/16-3.75P board.

Options:

\*6C-DE-104/16-3.75-S  
6C-DE-104/16-3.75-P

**Douglas Electronics, Inc.**

2777 Alvarado Street • San Leandro, CA 94577  
Voice +1.510.483.8770  
Fax +1.510.483.6453  
info@douglas.com

[www.douglas.com/pc104/](http://www.douglas.com/pc104/)

W-63