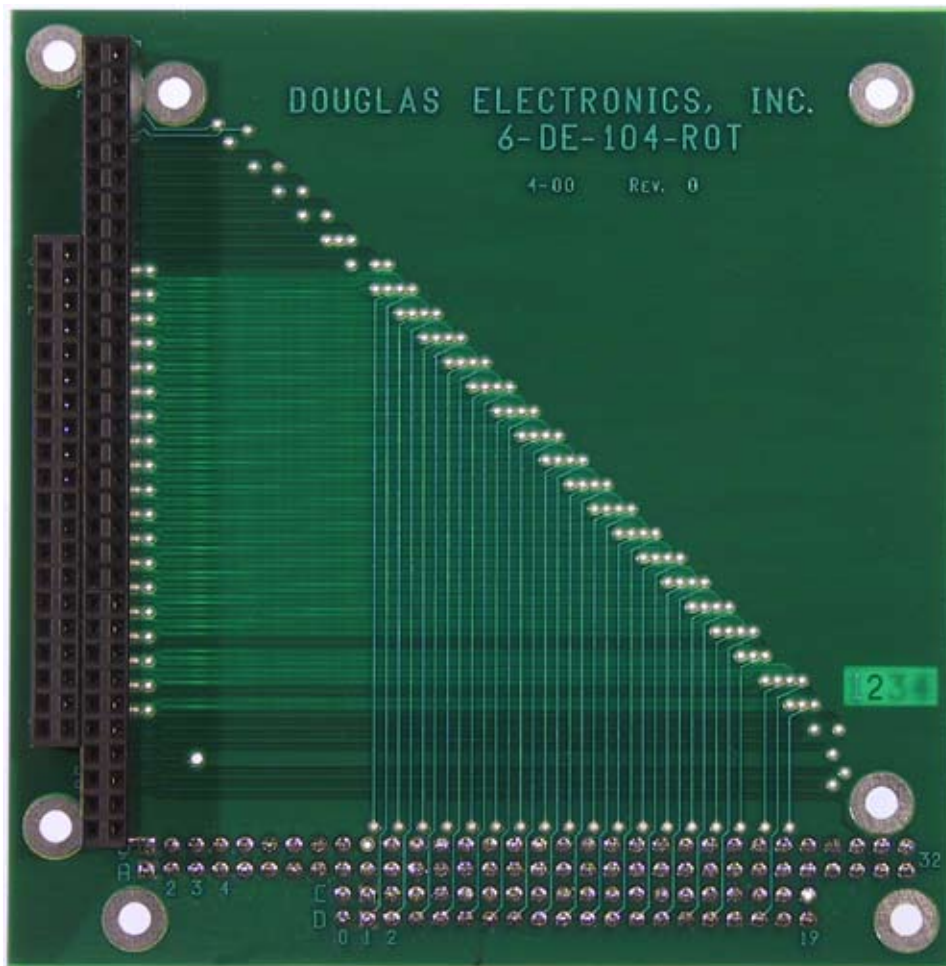
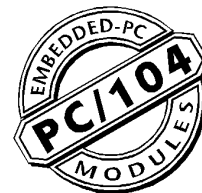




DOUGLAS
ELECTRONICS
INC.

6-DE-104-ROT

PC/104 Rotation
Board



The 6-DE-104-ROT board allows a PC/104 stack (not PC/104*Plus*) to be rotated. The rotation can be either clockwise or counter-clockwise. The board is normally supplied with pins only at one location and sockets only at the other location.

Options:

- 6-DE-104-ROT-CW (Clockwise rotation - as shown)
- 6-DE-104ROT-CCW (Counter-clockwise rotation)

Douglas Electronics, Inc.

2777 Alvarado Street • San Leandro, CA 94577
Voice +1.510.483.8770
Fax +1.510.483.6453
info@douglas.com

W-46

www.douglas.com/pc104/