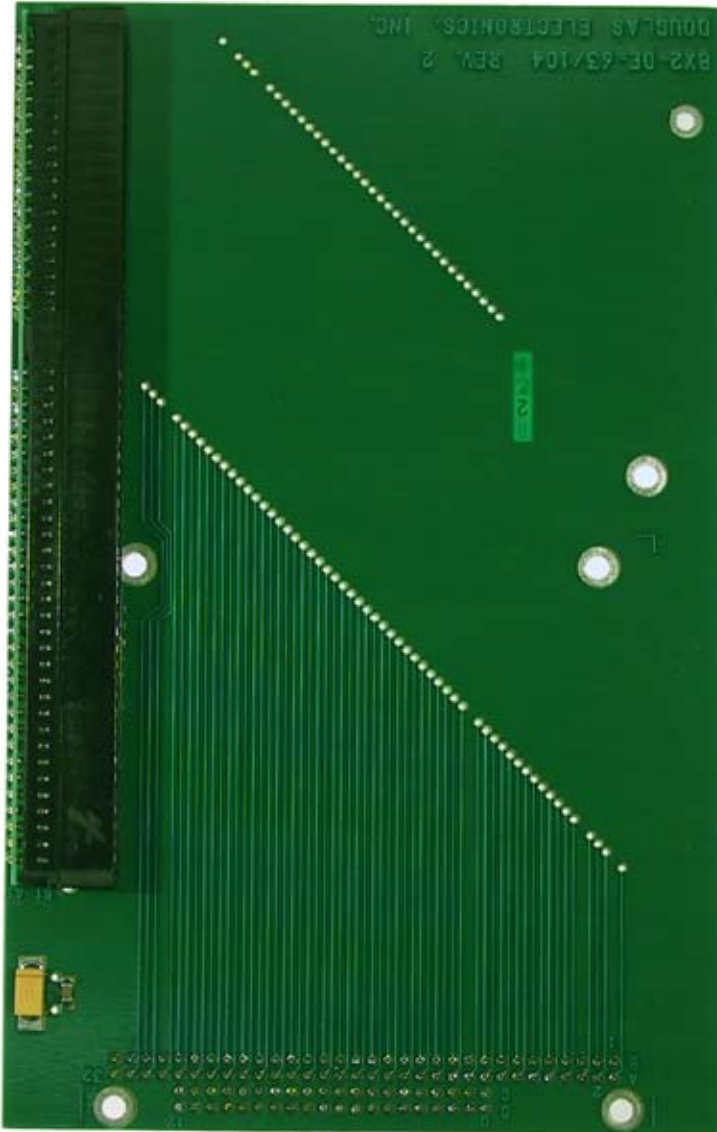
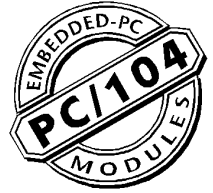




DOUGLAS
ELECTRONICS
INC.

BX2-DE-63/104

PC/104 Board <—> ISA Board
Interface



The BX2-DE-63/104 boards allow a single ISA board to be used on the top of a PC/104 stack with the ISA board parallel to the individual PC/104 boards.

There are three other variations of this board - the only difference between them being the relative location between the PC/104 connector and the ISA connector.

See the following items for all variations of this board:

- W-26: BX-DE-63/104RA (PC/104 to the left)
- W-27: BX-DE-63/104RB (PC/104 to the right)
- W-31: BX2-DE-63/104 (PC/104 at the end)
- W-78: BX-DE-63/104RC (PC/104 at the center)

Douglas Electronics, Inc.

2777 Alvarado Street • San Leandro, CA 94577
Voice +1.510.483.8770
Fax +1.510.483.6453
info@douglas.com

W-31

www.douglas.com/pc104/